



**ENTERPRISES
INCORPORATED**

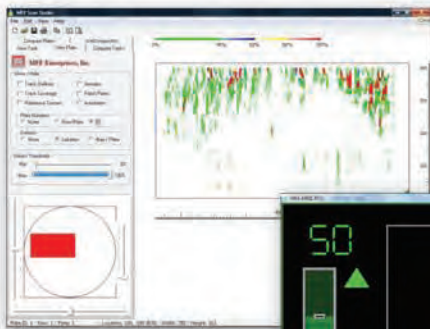


The World's Leading
Manufacturer of MFE / MFL
Tank Floor Scanners

MFE MARK 3

MFE Enterprises, Inc. is proud to announce the release of the new and improved Mark III lineup. The Mark III Floor Scanner addresses many issues faced by the modern day tank inspector, such as improved inspections through coated floors, improved inspections through thicker plates, fully adjustable thresholds for improved thresholding techniques, and the ability to produce color-coded maps of carbon steel loss across the tank floor. Initially, the Mark III Floor Scanner will be available in three different models:

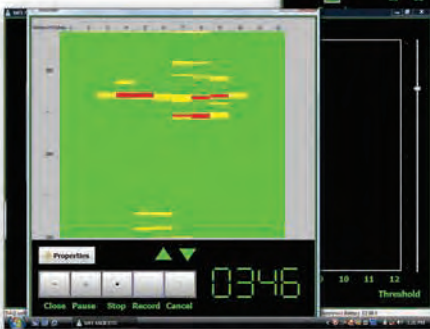
- **Manual Operation**
- **Stop-On-Defect**
- **Color Map**



MFE Scan Studio



Digital Real Time Display



C-Scan Image





Manual

The **Mark III Manual Operation Floor Scanner** is the base model. However, even the base model comes with multiple upgrades.

One major upgrade, an improved magnetic bridge allows for better sensitivity through coated tank floors and greater plate thickness. Another upgrade is the introduction of a rugged touch screen Panasonic Toughbook. The toughbook displays the digital volume loss signals in real time, allows the operator to adjust the gain and set the alarm.

This model can be upgraded to a Stop on Defect model.

Specification for MFE Mark 3 Manual

Scan Width	12 Inches
Maximum Single Scan Length	None
Speed	3 ft / second
Thickness Range	.75" / 20 mm
Test Through Coatings	Yes, if non-magnetic
Max Coating Thickness	Floor Plate and coating up to .75" / 20 mm
Real Time Analysis	Yes, 12 Channels
Power Requirements	12V Battery
Operation Weight	100 lbs
Freeze Screen Alarm	Yes
Sensitivity	Adjustable



MFE MARK 3

Upgraded Versions



Stop-on-Defect

The **Mark III Stop-On-Defect Floor Scanner** is an upgraded version of the Manual Operation unit that primarily offers a motor to drive the floor scanner. This unit also features a new and improved fully adjustable threshold. Any signal that rises above the set threshold will not only stop the motor but will also **freeze the signal(s) on screen** so that an inspector can quickly identify the location of the defect. This unit can be upgraded to a MFE Mark 3 ColorMap.

Specification for MFE Mark 3 Stop-On-Defect

Scan Width	12 Inches
Maximum Single Scan Length	None
Speed	Adjustable to 3ft / sec
Thickness Range	.75" / 20 mm
Test Through Coatings	Yes, if non-magnetic
Max Coating Thickness	Floor Plate and coating up to .75" / 20 mm
Real Time Analysis	Yes, 12 Channels
Power Requirements	12V Battery
Operation Weight	130 lbs
Freeze Screen Alarm	Yes
Real Time Display for Auto Stop	Yes
Auto Stop	Yes, Optional
Adjustable Threshold	Yes
Sensitivity	Adjustable

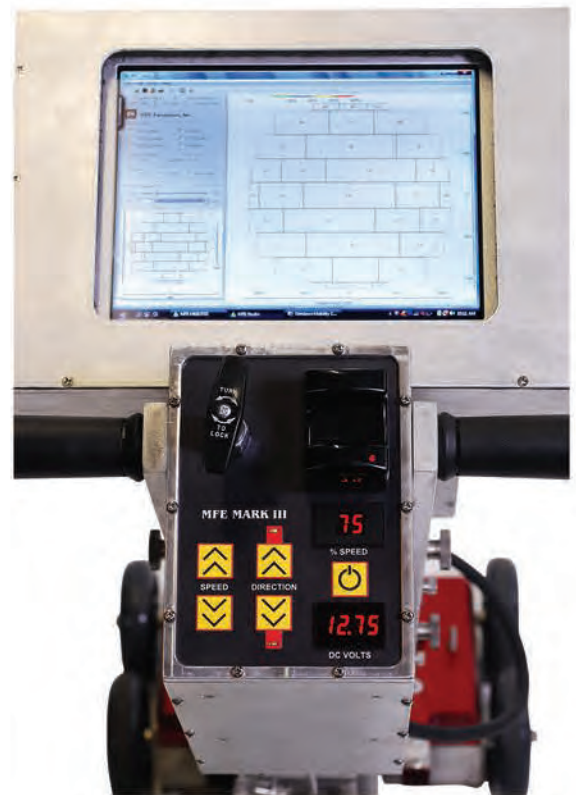


ColorMap

The Mark III ColorMap is the fully upgraded version of the Mark III that allows the inspector to **create a color-coded map** of the carbon steel loss across the tank floor. This unit includes versatile software that allows the inspector to **create a detailed tank floor schematic, view real time c-scan images and then overlay the actual floor scans on each plate**. The end result is a **color-coded map** of the tank floor that indicates precise locations of carbon steel loss in the plates. This is an excellent tool for determining how best to approach tank floor repairs.

Specification for MFE Mark 3 Color Map

Scan Width	12 Inches
Maximum Single Scan Length	None
Speed	Adjustable to 3ft / sec
Thickness Range	.75" / 20 mm
Data Storage	Yes
Test Through Coatings	Yes, if non-magnetic
Max Coating Thickness	Floor Plate and coating up to .75" / 20 mm
Real Time Analysis	Yes, 12 Channels
Power Requirements	12V Battery
Operation Weight	130 lbs
Freeze Screen Alarm	Yes
Real Time Display for Auto Stop	Yes
Auto Stop	Yes, Optional
Adjustable Threshold	Yes
Sensitivity	Adjustable
Create Report	Yes
CAD Tank Drawing Software	Yes



MFE 1212 Mark 2 EdgeScan



The **MFE 1212 Mark 2 EdgeScan** has become a must have on today's jobsite. This is the alternative to scrubbing the critical zone with ultrasonics. This Unit addresses the issue of scanning the critical zone (plate to shell). The two top wheels help guide the unit around the tank's shell while the handle pivots allowing the operator greater clearance from the shell. It has the same popular Real Time Display that all the MFE Mark 2 scanners utilize and can be upgraded to the Mark 3 electronics and touch screen.

Options include an extended signal cable and a carrying case to allow maximum mobility.

This unit will save time, money, and your back!

Specifications for the MFE 1212 Mark 2 EdgeScan

Scan Width	12 Inches
Maximum Single Scan Length	None
Speed	3 feet per second
Thickness Range	3/8"
Test tough coatings	Yes, if nonmagnetic
Max Coating Thickness	Floor Plate and coating up to 3/8"
Real Time Analysis	Yes, 6 Channels
Power Requirements	12V Battery
Operation Weight	50 lbs
Sensitivity	Adjustable
25 Ft extended signal cable	Optional
Soft Carrying Case	Optional





NEW

MFE HandScan

Hand Held MFE Scanner

MFE Enterprises, Inc. is proud to announce the release of the new **MFE HandScan unit**. The MFE HandScan Unit addresses the issue of scanning hard to reach areas and the limitations of larger scanners ability to scan next to the weld. Only 3.5 inches wide and 4.5 inches tall, this scanner will get you closer to a complete inspection. The wheels are in front and back which allows the sensor to be next to the weld. It has the same popular Real Time Display that all the MFE Mark 2 scanners utilize. It comes with an extended signal cable and a carrying case to allow maximum mobility. It also comes with a complete handle assembly if handheld operation is not required. It is the lightest and most compact MFE scanner on the market.

MFE Hand Scan Specifications

Weight	20 lbs
Electronics & Handle	18 lbs
Total Weight	38 lbs
In Shipping Case	148 lbs
Scanning Head Width	3.5"
Sensor to Plate Edge	0.0"
Real Time Display	Yes
Handle Assembly	Yes
Carrying Case	Yes
12- Volt Battery	Yes
Signal Cable	25 ft



www.mfescan.com

MFE Enterprises, Inc

26550 Ranch Road 12 Unit 5
Dripping Springs, TX 78620, USA

TEL: (281) 441 8284

FAX: (281) 441 8361

E-MAIL: dylanduke@mfescan.com

